

Question Paper Preview

Notations :

- 1.Options shown in green color and with ✓ icon are correct.
- 2.Options shown in red color and with ✗ icon are incorrect.

Question Paper Name :	Pharmacy 16th June 2025 Shift 1
Subject Name :	Pharmacy
Creation Date :	2025-06-16 14:30:48
Duration :	120
Total Marks :	120
Display Marks:	Yes
Share Answer Key With Delivery Engine :	Yes
Actual Answer Key :	Yes
Change Font Color :	No
Change Background Color :	No
Change Theme :	No
Help Button :	No
Show Reports :	No
Show Progress Bar :	No

Pharmacy

Group Number :	1
Group Id :	30841119
Group Maximum Duration :	0
Group Minimum Duration :	120
Show Attended Group? :	No
Edit Attended Group? :	No
Break time :	0
Group Marks :	120

Pharmacy

Section Id :	30841135
Section Number :	1
Section type :	Online
Mandatory or Optional :	Mandatory
Number of Questions :	120

Number of Questions to be attempted :	120
Section Marks :	120
Maximum Instruction Time :	0
Sub-Section Number :	1
Sub-Section Id :	30841135
Question Shuffling Allowed :	Yes

Question Number : 1 Question Id : 3084112161 Question Type : MCQ Option Shuffling : Yes Display Question Number : Yes

Correct Marks : 1 Wrong Marks : 0

Drug that shows antihypertensive and tranquilizing effects is

Options :

1. ✘ Digitalis
2. ✘ Cinchona
3. ✔ Rauwolfia
4. ✘ Ephedra

Question Number : 2 Question Id : 3084112162 Question Type : MCQ Option Shuffling : Yes Display Question Number : Yes

Correct Marks : 1 Wrong Marks : 0

When totally different drug is used in place of original drug, it is known as

Options :

1. ✔ Substitution
2. ✘ Admixture
3. ✘ Deterioration
4. ✘ Sophistication

Question Number : 3 Question Id : 3084112163 Question Type : MCQ Option Shuffling : Yes Display Question Number : Yes

Correct Marks : 1 Wrong Marks : 0

Which of the following tests is used for the detection of cardiac glycosides?

Options :

1. ✓ Keller-Kiliani test

2. ✗ Biuret test

3. ✗ Fehling's test

4. ✗ Salkowski test

Question Number : 4 Question Id : 3084112164 Question Type : MCQ Option Shuffling : Yes Display Question Number : Yes

Correct Marks : 1 Wrong Marks : 0

Clove oil contains nearly 70-90% of

Options :

1. ✗ Cinnamaldehyde

2. ✓ Eugenol

3. ✗ Menthol

4. ✗ Caryophylline

POP

Question Number : 5 Question Id : 3084112165 Question Type : MCQ Option Shuffling : Yes Display Question Number : Yes

Correct Marks : 1 Wrong Marks : 0

Which plant family does cotton (Gossypium) belong to?

Options :

1. ✗ Rosaceae

2. ✓ Malvaceae

3. ✗ Solanaceae

4. ✗ Fabaceae

Question Number : 6 Question Id : 3084112166 Question Type : MCQ Option Shuffling : Yes Display Question Number : Yes

Correct Marks : 1 Wrong Marks : 0

Red Squill is used as

Options :

1. ✓ Rodenticide
2. ✗ Larvicide
3. ✗ Wormicide
4. ✗ Herbicide

Question Number : 7 Question Id : 3084112167 Question Type : MCQ Option Shuffling : Yes Display Question Number : Yes

Correct Marks : 1 Wrong Marks : 0

Cryopreservation in plant tissue culture is used for

Options :

1. ✓ Long-term storage of plant genetic material
2. ✗ Enhancing photosynthesis rates
3. ✗ Short-term storage of plantlets
4. ✗ Eliminating contaminants from cultures

Question Number : 8 Question Id : 3084112168 Question Type : MCQ Option Shuffling : Yes Display Question Number : Yes

Correct Marks : 1 Wrong Marks : 0

The key property of glass wool that makes it useful in pharmaceutical applications is

Options :

1. ✗ Elasticity
2. ✗ Biodegradability
3. ✓ High thermal insulation
4. ✗ High tensile strength

Question Number : 9 Question Id : 3084112169 Question Type : MCQ Option Shuffling : Yes

Display Question Number : Yes

Correct Marks : 1 Wrong Marks : 0

Which leaf constant never changes with change in geographical conditions?

Options :

1. ✘ Pine needles
2. ✘ Triangular leaves
3. ✘ Waxy nature
4. ✔ Stomatal ratio

Question Number : 10 Question Id : 3084112170 Question Type : MCQ Option Shuffling : Yes

Display Question Number : Yes

Correct Marks : 1 Wrong Marks : 0

Which essential oil is commonly used for its insect-repelling properties?

Options :

1. ✘ Peppermint oil
2. ✘ Eucalyptus oil
3. ✔ Citronella oil
4. ✘ Rose oil

Question Number : 11 Question Id : 3084112171 Question Type : MCQ Option Shuffling : Yes

Display Question Number : Yes

Correct Marks : 1 Wrong Marks : 0

Which of the following enzyme deficiency leads to hemolytic anemia?

Options :

1. ✘ Phosphoglucomutase
2. ✘ Glucokinase
3. ✔ Pyruvate kinase

4. ✖ Phosphofruktokinase

Question Number : 12 Question Id : 3084112172 Question Type : MCQ Option Shuffling : Yes
Display Question Number : Yes

Correct Marks : 1 Wrong Marks : 0

Which enzyme is responsible for breaking down lactose?

Options :

1. ✔ Lactase
2. ✖ Amylase
3. ✖ Lipase
4. ✖ Protease

Question Number : 13 Question Id : 3084112173 Question Type : MCQ Option Shuffling : Yes
Display Question Number : Yes

Correct Marks : 1 Wrong Marks : 0

Which vitamin is a coenzyme for many dehydrogenase enzymes?

Options :

1. ✖ Vitamin A
2. ✔ Vitamin B1
3. ✖ Vitamin C
4. ✖ Vitamin D

Question Number : 14 Question Id : 3084112174 Question Type : MCQ Option Shuffling : Yes
Display Question Number : Yes

Correct Marks : 1 Wrong Marks : 0

Which of the following vitamin is involved as coenzyme function in transamination?

Options :

1. ✖ Thiamine
2. ✔ Pyridoxine

3. ✖ Riboflavin

4. ✖ Nicotinamide

Question Number : 15 Question Id : 3084112175 Question Type : MCQ Option Shuffling : Yes Display Question Number : Yes

Correct Marks : 1 Wrong Marks : 0

Which of the following nucleotide contains only ribose sugar and not deoxyribose?

Options :

1. ✖ Thymine – pentose sugar-phosphate
2. ✔ Uracil – pentose sugar-phosphate
3. ✖ Pyrimidine – pentose sugar-phosphate
4. ✖ Cytosine – pentose sugar-phosphate

Question Number : 16 Question Id : 3084112176 Question Type : MCQ Option Shuffling : Yes Display Question Number : Yes

Correct Marks : 1 Wrong Marks : 0

Which of the following statements best describes a lead compound?

Options :

1. ✖ A compound that contains the element lead
2. ✖ The first compound of a structural class of compounds to reach the market
3. ✖ A compound from the research laboratory that is chosen to go forward for preclinical and clinical trials
4. ✔ A molecule that shows some activity or property of interest and serves as the starting point for the development of a drug

Question Number : 17 Question Id : 3084112177 Question Type : MCQ Option Shuffling : Yes Display Question Number : Yes

Correct Marks : 1 Wrong Marks : 0

One of the following is not true regarding enantiomers

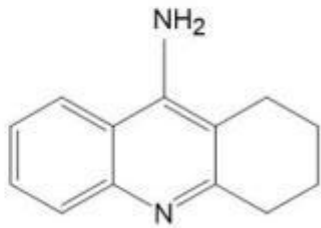
Options :

1. ✘ Mirror image
2. ✘ Non-super imposable
3. ✘ Form racemic mixture
4. ✔ One may be optically inactive

Question Number : 18 Question Id : 3084112178 Question Type : MCQ Option Shuffling : Yes Display Question Number : Yes

Correct Marks : 1 Wrong Marks : 0

For the management of which disease, the given drug is used?



Options :

1. ✘ Glaucoma
2. ✘ Antidote for anticholinesterase poisoning
3. ✘ As an insecticide
4. ✔ Alzheimer's disease

Question Number : 19 Question Id : 3084112179 Question Type : MCQ Option Shuffling : Yes Display Question Number : Yes

Correct Marks : 1 Wrong Marks : 0

Olanzapine is a derivative of

Options :

1. ✘ Dibenzooxazepine
2. ✘ Dibenzazepine
3. ✘ Benzisothiazole

4. ✓ Thienobenzodiazepine

Question Number : 20 Question Id : 3084112180 Question Type : MCQ Option Shuffling : Yes
Display Question Number : Yes

Correct Marks : 1 Wrong Marks : 0

Chemically benzocaine is

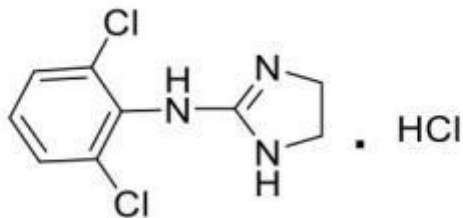
Options :

1. ✗ Propyl-4-amino benzoate
2. ✓ Ethyl-4-amino benzoate
3. ✗ Methyl-4-amino benzoate
4. ✗ Diethyl-4-amino benzoate

Question Number : 21 Question Id : 3084112181 Question Type : MCQ Option Shuffling : Yes
Display Question Number : Yes

Correct Marks : 1 Wrong Marks : 0

The figure given below is the structure of



Options :

1. ✓ Clonidine
2. ✗ Hydralazine
3. ✗ Timolol
4. ✗ Minoxidil

Question Number : 22 Question Id : 3084112182 Question Type : MCQ Option Shuffling : Yes
Display Question Number : Yes

Correct Marks : 1 Wrong Marks : 0

The anti-hyperlipidemic drugs that is a benzophenone derivative is

Options :

1. ✘ Ezetimibe
2. ✘ Probucol
3. ✔ Fenofibrate
4. ✘ Dalvastatin

Question Number : 23 Question Id : 3084112183 Question Type : MCQ Option Shuffling : Yes Display Question Number : Yes

Correct Marks : 1 Wrong Marks : 0

The anti-hypertensive drug with tetrazole structure is

Options :

1. ✘ Diazoxide
2. ✘ Teludipine
3. ✔ Valsartan
4. ✘ Lisinopril

POP

Question Number : 24 Question Id : 3084112184 Question Type : MCQ Option Shuffling : Yes Display Question Number : Yes

Correct Marks : 1 Wrong Marks : 0

Which anti-hypertensive drug contains benzothiadiazine structure?

Options :

1. ✔ Diazoxide
2. ✘ Hydralazine
3. ✘ Minoxidil
4. ✘ Losartan

Question Number : 25 Question Id : 3084112185 Question Type : MCQ Option Shuffling : Yes Display Question Number : Yes

Correct Marks : 1 Wrong Marks : 0

Which class of antibody is associated with an allergic reaction?

Options :

1. ✓ IgE
2. ✗ IgA
3. ✗ IgM
4. ✗ IgG

Question Number : 26 Question Id : 3084112186 Question Type : MCQ Option Shuffling : Yes

Display Question Number : Yes

Correct Marks : 1 Wrong Marks : 0

Which of the following is a second-generation antihistamine?

Options :

1. ✗ Dephenhydramine
2. ✗ Pheniramine
3. ✗ Promethazine
4. ✓ Fexofenadine

POP

Question Number : 27 Question Id : 3084112187 Question Type : MCQ Option Shuffling : Yes

Display Question Number : Yes

Correct Marks : 1 Wrong Marks : 0

Amoebiasis is caused by

Options :

1. ✗ Toxoplasma gondi
2. ✓ Entamoeba histolytica
3. ✗ Ascaris- lumbricoides
4. ✗ Teania sagineta

Question Number : 28 Question Id : 3084112188 Question Type : MCQ Option Shuffling : Yes

Display Question Number : Yes

Correct Marks : 1 Wrong Marks : 0

The antifungal antibiotic is

Options :

1. ✘ Gentamycin
2. ✔ Griseofulvin
3. ✘ Erythromycin
4. ✘ Ampicillin

Question Number : 29 Question Id : 3084112189 Question Type : MCQ Option Shuffling : Yes

Display Question Number : Yes

Correct Marks : 1 Wrong Marks : 0

Which of the following is not an appropriate target for antifungal drugs?

Options :

1. ✘ Ergosterol
2. ✘ Chitin
3. ✔ Cholesterol
4. ✘ β -glucon

Question Number : 30 Question Id : 3084112190 Question Type : MCQ Option Shuffling : Yes

Display Question Number : Yes

Correct Marks : 1 Wrong Marks : 0

Which of the following is not a type of β -lactam antibiotic?

Options :

1. ✘ Penicillins
2. ✔ Glycopeptides
3. ✘ Cephalosporins

4. ✖ Monobactams

Question Number : 31 Question Id : 3084112191 Question Type : MCQ Option Shuffling : Yes Display Question Number : Yes

Correct Marks : 1 Wrong Marks : 0

Which of the following is a nucleoside analog commonly used as a reverse transcriptase inhibitor in the treatment of HIV?

Options :

1. ✖ Acyclovir
2. ✖ Ribavirin
3. ✖ Adenine- arabinoside
4. ✔ Azidothymidine

Question Number : 32 Question Id : 3084112192 Question Type : MCQ Option Shuffling : Yes Display Question Number : Yes

Correct Marks : 1 Wrong Marks : 0

Which of the following drug has increased the risk of reflex tachycardia?

Options :

1. ✖ Verapamil
2. ✖ Diltiazem
3. ✔ Nifedipine
4. ✖ Captopril

Question Number : 33 Question Id : 3084112193 Question Type : MCQ Option Shuffling : Yes Display Question Number : Yes

Correct Marks : 1 Wrong Marks : 0

The important toxic effect of nitroprusside is

Options :

1. ✖ Hypertension

2. ✘ Neutropenia
3. ✔ Decreased thyroid function
4. ✘ Angio-odema

Question Number : 34 Question Id : 3084112194 Question Type : MCQ Option Shuffling : Yes Display Question Number : Yes

Correct Marks : 1 Wrong Marks : 0

The toxicity of sodium nitroprusside is due to

Options :

1. ✘ Accumulation of bradykinin
2. ✔ Accumulation of thiocyanate
3. ✘ Depletion of thiol groups
4. ✘ Haemolysis

Question Number : 35 Question Id : 3084112195 Question Type : MCQ Option Shuffling : Yes Display Question Number : Yes

Correct Marks : 1 Wrong Marks : 0

The important side effect of Propranolol is

Options :

1. ✘ Hypertension
2. ✘ Angio-odema
3. ✘ Dry cough
4. ✔ Night mares

Question Number : 36 Question Id : 3084112196 Question Type : MCQ Option Shuffling : Yes Display Question Number : Yes

Correct Marks : 1 Wrong Marks : 0

The drug of choice in the treatment of myoclonic seizures is

Options :

1. ✓ Sodium valproate
2. ✗ Phenobarbitol
3. ✗ Phenytoin
4. ✗ Ethosuximides

Question Number : 37 Question Id : 3084112197 Question Type : MCQ Option Shuffling : Yes
Display Question Number : Yes

Correct Marks : 1 Wrong Marks : 0

Heparin antagonist is having

Options :

1. ✗ Acidic nature
2. ✗ Neutral nature
3. ✓ Basic nature
4. ✗ Ionic nature

POP

Question Number : 38 Question Id : 3084112198 Question Type : MCQ Option Shuffling : Yes
Display Question Number : Yes

Correct Marks : 1 Wrong Marks : 0

The active metabolite of anticancer cyclophosphamide is

Options :

1. ✗ N-Acetyl cyclophosphamide
2. ✓ N-Hydroxyl cyclophosphamide
3. ✗ N-Propyl cyclophosphamide
4. ✗ N-Methyl cyclophosphamide

Question Number : 39 Question Id : 3084112199 Question Type : MCQ Option Shuffling : Yes

Display Question Number : Yes

Correct Marks : 1 Wrong Marks : 0

An example for sufonyl urea is

Options :

1. ✘ Metformin
2. ✘ Rosiglitazone
3. ✔ Tolbutamide
4. ✘ Repaglinide

Question Number : 40 Question Id : 3084112200 Question Type : MCQ Option Shuffling : Yes

Display Question Number : Yes

Correct Marks : 1 Wrong Marks : 0

Methothrexate exerts its action by

Options :

1. ✘ Forming conjugate with nucleic acid
2. ✔ Interfering with purine synthetase
3. ✘ Alkylating DNA
4. ✘ Inhibiting ATP formation

Question Number : 41 Question Id : 3084112201 Question Type : MCQ Option Shuffling : Yes

Display Question Number : Yes

Correct Marks : 1 Wrong Marks : 0

The apparatus used in limit test for Arsenic

Options :

1. ✘ Nesters cylinders
2. ✘ Separating funnel
3. ✔ Gutzeit apparatus

4. ✖ Beaker

Question Number : 42 Question Id : 3084112202 Question Type : MCQ Option Shuffling : Yes
Display Question Number : Yes

Correct Marks : 1 Wrong Marks : 0

What is added in preparation of barium sulphate reagent to prevent super saturation?

Options :

1. ✖ Butyl alcohol
2. ✔ Ethanol
3. ✖ Hydrochloric acid
4. ✖ Sulphuric acid

Question Number : 43 Question Id : 3084112203 Question Type : MCQ Option Shuffling : Yes
Display Question Number : Yes

Correct Marks : 1 Wrong Marks : 0

Ferrous thioglycolate in acidic solution shows

Options :

1. ✔ Pink
2. ✖ Blue
3. ✖ Yellow
4. ✖ Colorless

Question Number : 44 Question Id : 3084112204 Question Type : MCQ Option Shuffling : Yes
Display Question Number : Yes

Correct Marks : 1 Wrong Marks : 0

Aluminum hydroxide gel is used as

Options :

1. ✔ Antacid
2. ✖ Acidifying agent

3. ✖ Cathartic

4. ✖ Protective and adsorbent

Question Number : 45 Question Id : 3084112205 Question Type : MCQ Option Shuffling : Yes

Display Question Number : Yes

Correct Marks : 1 Wrong Marks : 0

The role of borax in cold creams is

Options :

1. ✔ Anti-microbial agent

2. ✖ To provide fine particles to polish skin

3. ✖ Adsorbent

4. ✖ Antioxidant

Question Number : 46 Question Id : 3084112206 Question Type : MCQ Option Shuffling : Yes

Display Question Number : Yes

Correct Marks : 1 Wrong Marks : 0

Which system among the following is called Shear Thickening?

Options :

1. ✔ Dilatant

2. ✖ Pseudo plastic

3. ✖ Newtonian

4. ✖ Plastic

Question Number : 47 Question Id : 3084112207 Question Type : MCQ Option Shuffling : Yes

Display Question Number : Yes

Correct Marks : 1 Wrong Marks : 0

Coulter counter is used to determine

Options :

1. ✖ Viscosity

2. ✘ Density
3. ✘ Particle interactions
4. ✔ Particle volume

Question Number : 48 Question Id : 3084112208 Question Type : MCQ Option Shuffling : Yes Display Question Number : Yes

Correct Marks : 1 Wrong Marks : 0

The effect of temperature on the rate of drug degradation was explained by

Options :

1. ✔ Arrhenius equation
2. ✘ Noyes-Whitney equation
3. ✘ Stoke's law
4. ✘ Fick's first law

Question Number : 49 Question Id : 3084112209 Question Type : MCQ Option Shuffling : Yes Display Question Number : Yes

Correct Marks : 1 Wrong Marks : 0

The difference in the potential between the actual surface and electroneutral region of solution is called as

Options :

1. ✘ Zeta potential
2. ✔ Nernst potential
3. ✘ Surface potential
4. ✘ Stern potential

Question Number : 50 Question Id : 3084112210 Question Type : MCQ Option Shuffling : Yes Display Question Number : Yes

Correct Marks : 1 Wrong Marks : 0

Non aqueous suspensions are sterilized by

Options :

1. ✘ Radiation
2. ✘ Gaseous sterilization
3. ✔ Dry heat sterilization
4. ✘ Wet heat sterilization

Question Number : 51 Question Id : 3084112211 Question Type : MCQ Option Shuffling : Yes
Display Question Number : Yes

Correct Marks : 1 Wrong Marks : 0

Which among the following antibody crosses the placenta?

Options :

1. ✘ IgA
2. ✘ IgB
3. ✔ IgG
4. ✘ IgE

POP

Question Number : 52 Question Id : 3084112212 Question Type : MCQ Option Shuffling : Yes
Display Question Number : Yes

Correct Marks : 1 Wrong Marks : 0

Delayed type of hypersensitivity is seen in

Options :

1. ✘ Arthus reaction
2. ✘ Anaphylaxis
3. ✘ Penicillin allergy
4. ✔ Tuberculin reaction

Question Number : 53 Question Id : 3084112213 Question Type : MCQ Option Shuffling : Yes

Display Question Number : Yes

Correct Marks : 1 Wrong Marks : 0

Killed bacterial vaccine is

Options :

1. ✓ Pertusis

2. ✗ BCG

3. ✗ Cholerae

4. ✗ Typhoid

Question Number : 54 Question Id : 3084112214 Question Type : MCQ Option Shuffling : Yes

Display Question Number : Yes

Correct Marks : 1 Wrong Marks : 0

Pentavalent vaccine gives protection against

Options :

1. ✗ DPT, Rubella and Measles

2. ✗ DPT, Polio and Hepatitis-B

3. ✗ DPT, Polio and Hepatitis-A

4. ✓ DPT, Haemophilus influenza-b and Hepatitis-B

Question Number : 55 Question Id : 3084112215 Question Type : MCQ Option Shuffling : Yes

Display Question Number : Yes

Correct Marks : 1 Wrong Marks : 0

Which test organism is used for microbiological assay of Neomycin?

Options :

1. ✗ Bacillus purilus

2. ✗ Saccharomyces plantarum

3. ✓ Escherichia Coli

4. ✖ Staphylococcus aureus

Question Number : 56 Question Id : 3084112216 Question Type : MCQ Option Shuffling : Yes Display Question Number : Yes

Correct Marks : 1 Wrong Marks : 0

Which of the following produces acquired active immune response leading to long term protection?

Options :

1. ✖ Toxoid
2. ✔ Vaccine
3. ✖ Tuberculin
4. ✖ Antitoxin

Question Number : 57 Question Id : 3084112217 Question Type : MCQ Option Shuffling : Yes Display Question Number : Yes

Correct Marks : 1 Wrong Marks : 0

Which disinfectants act by disrupting microbial membrane?

Options :

1. ✔ Cationic detergents
2. ✖ Heavy metals
3. ✖ Aldehydes
4. ✖ Halogens

Question Number : 58 Question Id : 3084112218 Question Type : MCQ Option Shuffling : Yes Display Question Number : Yes

Correct Marks : 1 Wrong Marks : 0

The numerical designation for Trichloro Monofluoro methane is

Options :

1. ✔ 011

2. ✖ 012

3. ✖ 013

4. ✖ 112

Question Number : 59 Question Id : 3084112219 Question Type : MCQ Option Shuffling : Yes Display Question Number : Yes

Correct Marks : 1 Wrong Marks : 0

Excipient used to improve the flow property of granules

Options :

1. ✖ Lubricants

2. ✖ Anti-adherents

3. ✖ Diluents

4. ✔ Glidants

Question Number : 60 Question Id : 3084112220 Question Type : MCQ Option Shuffling : Yes Display Question Number : Yes

Correct Marks : 1 Wrong Marks : 0

Unequal distribution of colour is known as

Options :

1. ✖ Lamination

2. ✖ Picking

3. ✔ Mottling

4. ✖ Capping

Question Number : 61 Question Id : 3084112221 Question Type : MCQ Option Shuffling : Yes Display Question Number : Yes

Correct Marks : 1 Wrong Marks : 0

Normal Saline I.P. contains sodium chloride of

Options :

1. ✓ 0.9% w/v
2. ✗ 9% w/v
3. ✗ 0.9% w/w
4. ✗ 0.09% w/v

Question Number : 62 Question Id : 3084112222 Question Type : MCQ Option Shuffling : Yes Display Question Number : Yes

Correct Marks : 1 Wrong Marks : 0

HLB system was developed by

Options :

1. ✗ Stock's
2. ✗ Dulla valle
3. ✗ Robert Hooke
4. ✓ Griffin

Question Number : 63 Question Id : 3084112223 Question Type : MCQ Option Shuffling : Yes Display Question Number : Yes

Correct Marks : 1 Wrong Marks : 0

Ratio of dry glycerin/dry gelatin in hard gelatin capsule is

Options :

1. ✗ 1:0.8
2. ✗ 0.6:1
3. ✗ 0.8:1
4. ✓ 0.4:1

Question Number : 64 Question Id : 3084112224 Question Type : MCQ Option Shuffling : Yes Display Question Number : Yes

Correct Marks : 1 Wrong Marks : 0

The Saponification value of the ideal suppository base is

Options :

1. ✓ 200-245
2. ✗ >250
3. ✗ 8-20
4. ✗ <100

Question Number : 65 Question Id : 3084112225 Question Type : MCQ Option Shuffling : Yes
Display Question Number : Yes

Correct Marks : 1 Wrong Marks : 0

Creaming in emulsion can be controlled by regulating

Options :

1. ✗ Volume of dispersion medium
2. ✓ Globule size
3. ✗ Di-butyl sterate
4. ✗ Interfacial tension

POP

Question Number : 66 Question Id : 3084112226 Question Type : MCQ Option Shuffling : Yes
Display Question Number : Yes

Correct Marks : 1 Wrong Marks : 0

Which of the following PK parameter is considered in dosage regimen of epilepsy?

Options :

1. ✗ Volume of distribution
2. ✗ T_{max}
3. ✗ C_{max}
4. ✓ Area under curve

Question Number : 67 Question Id : 3084112227 Question Type : MCQ Option Shuffling : Yes

Display Question Number : Yes

Correct Marks : 1 Wrong Marks : 0

According to Biopharmaceutics classification system, Class –II drugs are

Options :

1. ✘ Highly soluble & Low permeable
2. ✔ Low soluble & Highly permeable
3. ✘ Highly soluble & Highly permeable
4. ✘ Low soluble & Low permeable

Question Number : 68 Question Id : 3084112228 Question Type : MCQ Option Shuffling : Yes

Display Question Number : Yes

Correct Marks : 1 Wrong Marks : 0

Which agent is used to determine active tubular secretion?

Options :

1. ✘ Creatinine
2. ✘ Inulin
3. ✔ Para amino hippuric acid
4. ✘ Mannitol

Question Number : 69 Question Id : 3084112229 Question Type : MCQ Option Shuffling : Yes

Display Question Number : Yes

Correct Marks : 1 Wrong Marks : 0

Which barrier is present in tight junctions between Sertoli cells?

Options :

1. ✘ Placental barrier
2. ✘ Endothelial barrier
3. ✘ BBB
4. ✔ Blood-testis barrier

Question Number : 70 Question Id : 3084112230 Question Type : MCQ Option Shuffling : Yes Display Question Number : Yes

Correct Marks : 1 Wrong Marks : 0

When two brands of drug product give same clinical results, it is called as

Options :

1. ✓ Therapeutic equivalence
2. ✗ Pharmaceutical equivalence
3. ✗ Clinical equivalence
4. ✗ Bio equivalence

Question Number : 71 Question Id : 3084112231 Question Type : MCQ Option Shuffling : Yes Display Question Number : Yes

Correct Marks : 1 Wrong Marks : 0

Phenobarbitones are better absorbed from stomach because

Options :

1. ✗ Weak acids remain ionic in gastric pH
2. ✓ Weak acids remain nonionic in gastric pH
3. ✗ Strong acids remain ionic in gastric pH
4. ✗ Weak bases are ionic in gastric pH

Question Number : 72 Question Id : 3084112232 Question Type : MCQ Option Shuffling : Yes Display Question Number : Yes

Correct Marks : 1 Wrong Marks : 0

Which drug is showing nonlinearity due to saturation of binding sites on plasma proteins?

Options :

1. ✓ Naproxen
2. ✗ Ascorbic acid

3. ✖ Carbamazepine

4. ✖ Penicillin G

Question Number : 73 Question Id : 3084112233 Question Type : MCQ Option Shuffling : Yes Display Question Number : Yes

Correct Marks : 1 Wrong Marks : 0

What is the driving force for Pore transport?

Options :

1. ✖ Concentration gradient

2. ✖ Electrochemical gradient

3. ✖ Diffusion

4. ✔ Hydrostatic pressure

Question Number : 74 Question Id : 3084112234 Question Type : MCQ Option Shuffling : Yes Display Question Number : Yes

Correct Marks : 1 Wrong Marks : 0

Partial agonist possess

Options :

1. ✖ Maximum intrinsic activity and low affinity

2. ✖ High intrinsic activity and no affinity

3. ✔ Low intrinsic activity and high affinity

4. ✖ Low intrinsic activity and low affinity

Question Number : 75 Question Id : 3084112235 Question Type : MCQ Option Shuffling : Yes Display Question Number : Yes

Correct Marks : 1 Wrong Marks : 0

Ethosuximide can be used for the treatment of

Options :

1. ✖ Generalized tonic clonic seizures

2. ✓ Absence seizures
3. ✗ Complex seizure
4. ✗ Myoclonic seizures

Question Number : 76 Question Id : 3084112236 Question Type : MCQ Option Shuffling : Yes Display Question Number : Yes

Correct Marks : 1 Wrong Marks : 0

Shortest acting benzodiazepine is

Options :

1. ✓ Midazolam
2. ✗ Alprazolam
3. ✗ Lorazepam
4. ✗ Diazepam

Question Number : 77 Question Id : 3084112237 Question Type : MCQ Option Shuffling : Yes Display Question Number : Yes

Correct Marks : 1 Wrong Marks : 0

Which of the following is an adverse effect of β_2 agonists?

Options :

1. ✗ Hypoglycemia
2. ✗ Hypomagnesemia
3. ✗ Hypophosphatemia
4. ✓ Hypokalemia

Question Number : 78 Question Id : 3084112238 Question Type : MCQ Option Shuffling : Yes Display Question Number : Yes

Correct Marks : 1 Wrong Marks : 0

Botulinum toxin causes paralysis by

Options :

1. ✘ Inhibiting choline acetyltransferase
2. ✘ Blocking transport of choline into neurons
3. ✔ Blocking release of acetylcholine from storage vesicles
4. ✘ Blocking the synapse at ganglia

Question Number : 79 Question Id : 3084112239 Question Type : MCQ Option Shuffling : Yes
Display Question Number : Yes

Correct Marks : 1 Wrong Marks : 0

Which animal's saliva is the source of the anticoagulant hirudin used in medicine?

Options :

1. ✘ Snake
2. ✔ Leech
3. ✘ Scorpion
4. ✘ Bat

POP

Question Number : 80 Question Id : 3084112240 Question Type : MCQ Option Shuffling : Yes
Display Question Number : Yes

Correct Marks : 1 Wrong Marks : 0

Aminocaproic acid is an example of which type of drug?

Options :

1. ✘ Fibrinolytic
2. ✔ Antifibrinolytic
3. ✘ Direct-acting anticoagulant
4. ✘ Indirect-acting anticoagulant

Question Number : 81 Question Id : 3084112241 Question Type : MCQ Option Shuffling : Yes

Display Question Number : Yes

Correct Marks : 1 Wrong Marks : 0

Which of the following drug is not an inhaled glucocorticoid?

Options :

1. ✘ Triamcinolone
2. ✘ Beclomethasone
3. ✔ Sodium cromoglycate
4. ✘ Budesonide

Question Number : 82 Question Id : 3084112242 Question Type : MCQ Option Shuffling : Yes

Display Question Number : Yes

Correct Marks : 1 Wrong Marks : 0

Nitric oxide is a potent gaseous vasodilator autacoid produced from

Options :

1. ✘ Alanine
2. ✘ Asparagine
3. ✘ Methionine
4. ✔ Arginine

Question Number : 83 Question Id : 3084112243 Question Type : MCQ Option Shuffling : Yes

Display Question Number : Yes

Correct Marks : 1 Wrong Marks : 0

Which of the following insulin preparation has the longest duration of action?

Options :

1. ✘ Semilente
2. ✘ Isophane
3. ✘ Lente
4. ✔ Tresiba

Question Number : 84 Question Id : 3084112244 Question Type : MCQ Option Shuffling : Yes Display Question Number : Yes

Correct Marks : 1 Wrong Marks : 0

Most serious adverse effect of antithyroid drug, propylthiouracil is

Options :

1. ✘ Lactic acidosis
2. ✔ Agranulocytosis
3. ✘ Alopecia
4. ✘ Nephritis

Question Number : 85 Question Id : 3084112245 Question Type : MCQ Option Shuffling : Yes Display Question Number : Yes

Correct Marks : 1 Wrong Marks : 0

Which of the following is a Beta-lactamase inhibitor?

Options :

1. ✘ Ampicillin
2. ✘ Doripenem
3. ✔ Clavulanic acid
4. ✘ Amikacin

Question Number : 86 Question Id : 3084112246 Question Type : MCQ Option Shuffling : Yes Display Question Number : Yes

Correct Marks : 1 Wrong Marks : 0

Which of the following is a fifth-generation cephalosporin?

Options :

1. ✘ Cefuroxime
2. ✘ Cefoperazone

3. ✘ Cefepime
4. ✔ Ceftaroline

Question Number : 87 Question Id : 3084112247 Question Type : MCQ Option Shuffling : Yes Display Question Number : Yes

Correct Marks : 1 Wrong Marks : 0

Which drug is a small molecule EGFR/HER2 inhibitor that is synthetic, orally bioavailable and capable of blocking the tyrosine kinase activity of liganded HER2?

Options :

1. ✘ Trastuzumab
2. ✔ Lapatinib
3. ✘ Pertuzumab
4. ✘ Cetuximab

Question Number : 88 Question Id : 3084112248 Question Type : MCQ Option Shuffling : Yes Display Question Number : Yes

Correct Marks : 1 Wrong Marks : 0

What is the mechanism of action of Caspofungin?

Options :

1. ✘ It interacts with polymerized microtubules
2. ✔ Inhibit glycan synthesis by inhibiting beta 1,3 glycan synthase
3. ✘ Inhibit lanosterol alpha demethylase thereby preventing ergosterol synthesis
4. ✘ It causes accumulation of toxic squalene

Question Number : 89 Question Id : 3084112249 Question Type : MCQ Option Shuffling : Yes Display Question Number : Yes

Correct Marks : 1 Wrong Marks : 0

What is the primary purpose of a Phase 1 clinical trial?

Options :

1. ✘ To test the effectiveness of the treatment
2. ✔ To determine the optimal dosage range
3. ✘ To evaluate long-term safety
4. ✘ To compare the new treatment with existing treatments

Question Number : 90 Question Id : 3084112250 Question Type : MCQ Option Shuffling : Yes Display Question Number : Yes

Correct Marks : 1 Wrong Marks : 0

Type B adverse drug reaction is

Options :

1. ✘ Augmented effect of the drug
2. ✔ Allergic effect of the drug
3. ✘ Effect seen on chronic use of the drug
4. ✘ Delayed effect of the drug

Question Number : 91 Question Id : 3084112251 Question Type : MCQ Option Shuffling : Yes Display Question Number : Yes

Correct Marks : 1 Wrong Marks : 0

Therapeutic drug monitoring is not done for drugs

Options :

1. ✘ Having known correlation between serum level and drug response or toxicity
2. ✘ Having wide variation in pharmacokinetics
3. ✘ Having low therapeutic index
4. ✔ Which are activated in the body or produce active metabolites

Question Number : 92 Question Id : 3084112252 Question Type : MCQ Option Shuffling : Yes Display Question Number : Yes

Correct Marks : 1 Wrong Marks : 0

Arthus reaction and serum sickness are characteristic of

Options :

1. ✘ Type I hypersensitivity reactions
2. ✘ Type II hypersensitivity reactions
3. ✔ Type III hypersensitivity reactions
4. ✘ Type IV hypersensitivity reactions

Question Number : 93 Question Id : 3084112253 Question Type : MCQ Option Shuffling : Yes

Display Question Number : Yes

Correct Marks : 1 Wrong Marks : 0

A patient prescribed a statin for cholesterol management should be counselled about

Options :

1. ✘ Consuming grape fruit juice daily to boost medication efficacy
2. ✔ Reporting muscle pain or weakness to their healthcare provider
3. ✘ Skipping meals to prevent gastrointestinal discomfort
4. ✘ Expecting immediate results in lowering cholesterol levels

Question Number : 94 Question Id : 3084112254 Question Type : MCQ Option Shuffling : Yes

Display Question Number : Yes

Correct Marks : 1 Wrong Marks : 0

Which type of cell produces hydrochloric acid?

Options :

1. ✘ Zymogenic cells
2. ✔ Parietal cells
3. ✘ Chief cells
4. ✘ Enteroendocrine cells

Question Number : 95 Question Id : 3084112255 Question Type : MCQ Option Shuffling : Yes

Display Question Number : Yes

Correct Marks : 1 Wrong Marks : 0

In a healthy person, which of these lung volumes should be the largest?

Options :

1. ✘ Tidal volume
2. ✔ Vital capacity
3. ✘ Expiratory reserve volume
4. ✘ Residual volume

Question Number : 96 Question Id : 3084112256 Question Type : MCQ Option Shuffling : Yes

Display Question Number : Yes

Correct Marks : 1 Wrong Marks : 0

Parkinson's disease is associated with a significant depletion of which neurotransmitter?

Options :

1. ✘ Acetylcholine
2. ✔ Dopamine
3. ✘ Norepinephrine
4. ✘ Serotonin

Question Number : 97 Question Id : 3084112257 Question Type : MCQ Option Shuffling : Yes

Display Question Number : Yes

Correct Marks : 1 Wrong Marks : 0

Which m-cholino blocking agent is used as an anti-asthmatic?

Options :

1. ✔ Ipratropium
2. ✘ Atropine

3. ✘ Platiphylline

4. ✘ Metacin

Question Number : 98 Question Id : 3084112258 Question Type : MCQ Option Shuffling : Yes Display Question Number : Yes

Correct Marks : 1 Wrong Marks : 0

Which of the following is used to measure control of blood sugar in diabetes mellitus?

Options :

1. ✘ HbA

2. ✘ HbS

3. ✘ HbA2

4. ✔ HbA1C

Question Number : 99 Question Id : 3084112259 Question Type : MCQ Option Shuffling : Yes Display Question Number : Yes

Correct Marks : 1 Wrong Marks : 0

Which is the MAO-B Inhibitor drug used for the treatment of Parkinson disease?

Options :

1. ✘ Entacapone

2. ✘ Bromocriptine

3. ✘ Ropinirole

4. ✔ Rasagiline

Question Number : 100 Question Id : 3084112260 Question Type : MCQ Option Shuffling : Yes Display Question Number : Yes

Correct Marks : 1 Wrong Marks : 0

If NaOH used for preparation of 1 N solution is only 90% pure; then how much absolute error occurs (in ml) when titrated against 10 ml 1 N HCl solution?

Options :

1. ✘ 10
2. ✘ 10.1
3. ✘ 11
4. ✔ 11.1

Question Number : 101 Question Id : 3084112261 Question Type : MCQ Option Shuffling : Yes Display Question Number : Yes

Correct Marks : 1 Wrong Marks : 0

Potassium permanganate is used in redox titration as

Options :

1. ✘ Coloring agent
2. ✘ Buffering agent
3. ✘ Reducing agent
4. ✔ Self indicator

POP

Question Number : 102 Question Id : 3084112262 Question Type : MCQ Option Shuffling : Yes Display Question Number : Yes

Correct Marks : 1 Wrong Marks : 0

Which of the following is used as indicator electrode in polarography?

Options :

1. ✘ Glass
2. ✔ Dropping mercury
3. ✘ Platinum
4. ✘ Silver

Question Number : 103 Question Id : 3084112263 Question Type : MCQ Option Shuffling : Yes Display Question Number : Yes

Correct Marks : 1 Wrong Marks : 0

The standard employed for the testing parameter of 'Control of absorbance' during calibration of UV Spectrometer is

Options :

1. ✘ Potassium dichromate in 0.05 M Hydrochloric acid
2. ✘ 0.02% Toluene in hexane solution
3. ✔ Potassium dichromate in 0.05 M Sulphuric acid
4. ✘ 0.02% Toluene in Chloroform solution

Question Number : 104 Question Id : 3084112264 Question Type : MCQ Option Shuffling : Yes Display Question Number : Yes

Correct Marks : 1 Wrong Marks : 0

Comparison between the distance travelled between sample and standard spot is

Options :

1. ✔ R_f value
2. ✘ R_x value
3. ✘ R_m value
4. ✘ R_t value

POP

Question Number : 105 Question Id : 3084112265 Question Type : MCQ Option Shuffling : Yes Display Question Number : Yes

Correct Marks : 1 Wrong Marks : 0

The standard employed for the testing parameter of 'control of absorbance' during calibration of UV Spectrophotometer is

Options :

1. ✘ Potassium dichromate in 0.05M hydrochloric acid
2. ✘ 0.02 % toluene in hexane solution
3. ✔ Potassium dichromate in 0.05M sulphuric acid
4. ✘ 0.02% toluene in chloroform solution

Question Number : 106 Question Id : 3084112266 Question Type : MCQ Option Shuffling : Yes Display Question Number : Yes

Correct Marks : 1 Wrong Marks : 0

How many fundamental stretching vibrations can be expected for C_2H_2 ?

Options :

1. ✓ Seven
2. ✗ Six
3. ✗ Twelve
4. ✗ Eleven

Question Number : 107 Question Id : 3084112267 Question Type : MCQ Option Shuffling : Yes Display Question Number : Yes

Correct Marks : 1 Wrong Marks : 0

Which of the column is used to remove impurities and extend the main analytical column life?

Options :

1. ✗ Octadecyl column
2. ✗ Silanol column
3. ✓ Guard column
4. ✗ Butyl column

Question Number : 108 Question Id : 3084112268 Question Type : MCQ Option Shuffling : Yes Display Question Number : Yes

Correct Marks : 1 Wrong Marks : 0

Flame ionization detectors are used in

Options :

1. ✗ HPLC
2. ✗ TLC

3. ✓ Gas chromatography

4. ✗ Ion exchange chromatography

Question Number : 109 Question Id : 3084112269 Question Type : MCQ Option Shuffling : Yes
Display Question Number : Yes

Correct Marks : 1 Wrong Marks : 0

Which chromatography is also called as filtration chromatography?

Options :

1. ✗ TLC

2. ✓ Gel chromatography

3. ✗ Ion exchange chromatography

4. ✗ HPLC

Question Number : 110 Question Id : 3084112270 Question Type : MCQ Option Shuffling : Yes
Display Question Number : Yes

Correct Marks : 1 Wrong Marks : 0

The use of insulin hormone to purify its receptor is an example of

Options :

1. ✗ Ion exchange chromatography

2. ✓ Affinity chromatography

3. ✗ Gel filtration chromatography

4. ✗ Ligand-mediated chromatography

Question Number : 111 Question Id : 3084112271 Question Type : MCQ Option Shuffling : Yes
Display Question Number : Yes

Correct Marks : 1 Wrong Marks : 0

Which filter size is used to filter the mobile phase?

Options :

1. ✗ 0.10 μm

2. ✓ 0.22 μm

3. ✗ 0.45 μm

4. ✗ 0.52 μm

Question Number : 112 Question Id : 3084112272 Question Type : MCQ Option Shuffling : Yes Display Question Number : Yes

Correct Marks : 1 Wrong Marks : 0

Main advantage of DME is

Options :

1. ✓ Surface is reproducible, smooth and continuously renewed

2. ✗ Capillary is very small in diameter

3. ✗ Mercury is easily oxidized

4. ✗ It is used for analysis of reducible or easily oxidizable substances

Question Number : 113 Question Id : 3084112273 Question Type : MCQ Option Shuffling : Yes Display Question Number : Yes

Correct Marks : 1 Wrong Marks : 0

The carrier gas used in GC with high viscosity is

Options :

1. ✗ Hydrogen

2. ✗ Nitrogen

3. ✓ Helium

4. ✗ CO₂

Question Number : 114 Question Id : 3084112274 Question Type : MCQ Option Shuffling : Yes Display Question Number : Yes

Correct Marks : 1 Wrong Marks : 0

According to the principles of ICH-GCP, what is the most important consideration when conducting a clinical trial?

Options :

1. ✓ Protection of trial subjects
2. ✗ Process adherence
3. ✗ Statistical quality check
4. ✗ Regulatory compliance

Question Number : 115 Question Id : 3084112275 Question Type : MCQ Option Shuffling : Yes Display Question Number : Yes

Correct Marks : 1 Wrong Marks : 0

What is the part of quality system covering the manufacturer testing of active ingredients and finished product?

Options :

1. ✗ GLP
2. ✗ GHP
3. ✓ GMP
4. ✗ GC

POP

Question Number : 116 Question Id : 3084112276 Question Type : MCQ Option Shuffling : Yes Display Question Number : Yes

Correct Marks : 1 Wrong Marks : 0

Which of the following Acts primarily deals with the licensing and regulation of pharmacies and pharmacists in India?

Options :

1. ✗ Drugs and Cosmetics Act, 1940
2. ✓ Pharmacy Act, 1948
3. ✗ Narcotic Drugs and Psychotropic Substances Act, 1985

4. ✖ Drugs Price Control Order

Question Number : 117 Question Id : 3084112277 Question Type : MCQ Option Shuffling : Yes Display Question Number : Yes

Correct Marks : 1 Wrong Marks : 0

The primary objective of the Drugs and Cosmetics Act, 1940, is to

Options :

1. ✖ Control the prices of essential medicines
2. ✔ Regulate the manufacture, sale and distribution of drugs & cosmetics
3. ✖ Prevent the misuse of narcotic and psychotropic substances
4. ✖ Establish and maintain a national pharmacopoeia

Question Number : 118 Question Id : 3084112278 Question Type : MCQ Option Shuffling : Yes Display Question Number : Yes

Correct Marks : 1 Wrong Marks : 0

Which of the following Act deals specifically with the control and regulation of controlled substances and their products?

Options :

1. ✖ Pharmacy Act, 1948
2. ✖ Drugs and Cosmetics Act, 1940
3. ✔ Narcotic Drugs and Psychotropic Substances Act, 1985
4. ✖ Drugs Price Control Order

Question Number : 119 Question Id : 3084112279 Question Type : MCQ Option Shuffling : Yes Display Question Number : Yes

Correct Marks : 1 Wrong Marks : 0

The Drugs Price Control Order is primarily concerned with

Options :

1. ✖ Regulating the manufacture of drugs

2. ✓ Controlling the prices of certain essential medicines
3. ✘ Ensuring the quality of imported drugs
4. ✘ Licensing pharmacies and pharmacists

Question Number : 120 Question Id : 3084112280 Question Type : MCQ Option Shuffling : Yes Display Question Number : Yes

Correct Marks : 1 Wrong Marks : 0

Which of the following is NOT a key function of the Central Drugs Standard Control Organization (CDSCO)?

Options :

1. ✘ Approving new drugs for marketing in India
2. ✘ Conducting drug inspections
3. ✘ Setting standards for drug quality and safety
4. ✓ Directly dispensing medicines to the public